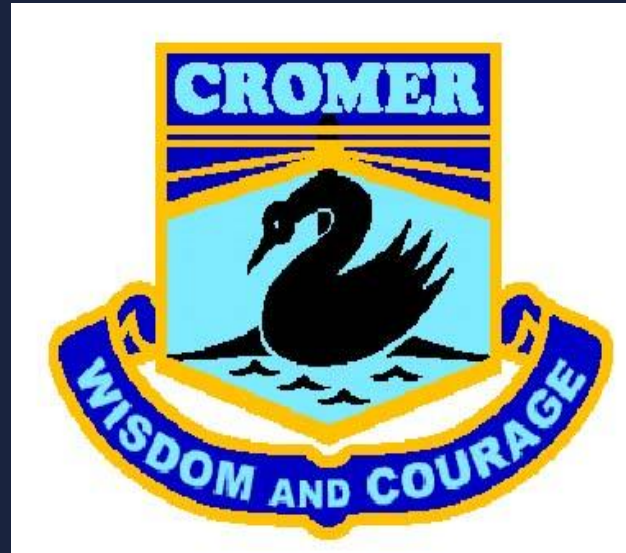


Return to school Level 3 plus

Information current as at 7 October 2021

Developed in partnership with NSW Health



Acknowledgement of Country

I would like to acknowledge the ongoing custodians of the land I'm meeting on today and recognise their long history and connection to their country, and to the care they have given for thousands of years.

I also acknowledge the Ongoing Custodians of the various lands on which you are all calling in from today and the Aboriginal and Torres Strait Islander people participating in this meeting and throughout our school community.



What we'll cover in this session

Term 4 return to school



Key dates
COVID-safe practices at our school
Vaccinations
Out of school hours care
Where to find out more
Questions and answers

What you need to know about our return to school in Term 4

We're excited about our return to face-to-face learning and welcoming students and staff back onsite where we know the best learning happens.

We are taking a layered-approach to ensuring our school is safe for our staff and students.

Our guidance was developed with NSW Health and is evidence-based to give us multiple layers of protection.

COVID-safe operations for schools

Department preschools, Kindergarten & Year 1	All other years	
18 October	25 October	
		
		

Key dates for our staged return

It's important that we stick to the staged return to give us time to be ready to welcome back students onsite. Students will return to face-to-face learning in the following order

- from 18 October –Kindergarten and Year 1
- from 25 October – all remaining year groups (Years 2, 3, 4, 5, and 6).



Primary school students return

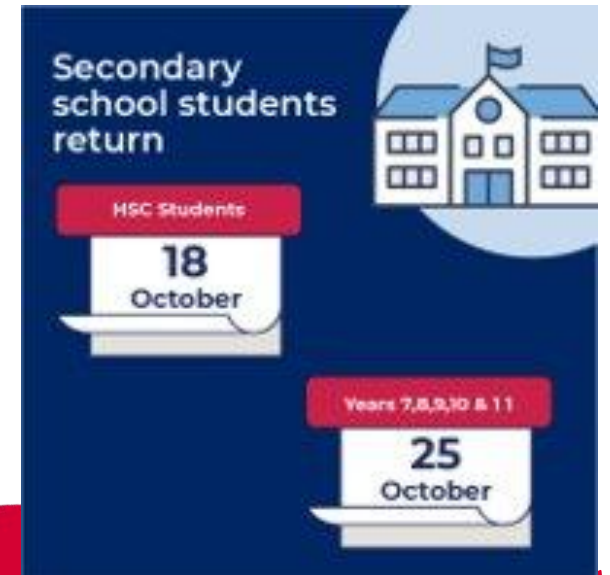
Department preschools, Kindergarten & Year 1

18 October

Years 2, 3, 4, 5 & 6

25 October

The graphic features a dark blue background with a white schoolhouse icon in a light blue circle on the right. Two white calendar-style date cards are shown: one for 18 October and another for 25 October. Red banners above the dates specify the student groups: 'Department preschools, Kindergarten & Year 1' for the 18th and 'Years 2, 3, 4, 5 & 6' for the 25th.



Secondary school students return

HSC Students

18 October

Years 7, 8, 9, 10 & 11

25 October

The graphic features a dark blue background with a white schoolhouse icon in a light blue circle on the right. Two white calendar-style date cards are shown: one for 18 October and another for 25 October. Red banners above the dates specify the student groups: 'HSC Students' for the 18th and 'Years 7, 8, 9, 10 & 11' for the 25th.

Vaccinations

COVID-19 vaccination is the best protection against severe illness and also reduces the risk of spreading it to others.

All staff required on site supporting the return to school will need to be fully vaccinated from 18 October.

Then from 8 November all staff, contractors, volunteers and students on student placement on a school site will need to be fully vaccinated, including Outside of School Hours Care staff.

Canteen and Uniform shop Managers and staff must be fully vaccinated to operate on site. More information to come regarding operational procedures.

All our staff are fully vaccinated, including Support and Administration staff.



Keeping student groups together

As we return to school students will be kept in their cohorts to minimise opportunities for transmission of COVID-19 and to enable effective contact tracing and containment.



This means minimising interaction between students on school grounds and keeping cohorts together where possible.

Week 3 - Recess and lunch times will stay the same.

Week 4 - Recess and lunch will change to enable each grade to have their own area to play in, in the playground

Entry & Exit to the School

Level 3 plus; 18 October - Week 3 - All Kindergarten and Year 1 learning onsite

School Access: Start and end of day

- School gates will be supervised by executives at start and end of day.
- No parents to enter the school site under any circumstances.
- **Wet weather plan:** Kinder & Year 1 students straight to their own classroom from 8:30am
- **Wet weather plan:** Years 2-6 essential students straight into their holding classroom from 8:30am

Meehan Road Gate: morning

- Kindergarten and Year 1 students will be met by their class teacher from 8:30am
- Kindergarten students then drop their bag outside their classroom and play in the Kinder playground
- Year 1 students drop their bag outside their classroom and play in the Year 1 part of the shaded common area

Meehan Road Gate: afternoon

- 2:40pm - Kinder pick up (escorted by class teachers)
- 2:45pm - Yr 1 pick up (escorted by class teachers)
- 2:50pm - Yr 2 essential students pick up (escorted by supervising teachers)

Carcoola Road and Dorothy Street Gate: morning and afternoon

- Years 2 - 6 essential students drop off their bags at their classroom and then go to the shaded common and basketball court to play from 8:30am
- Years 2 - 6 essential students leave the school at 2:50pm

Waroon Road Gate: afternoon

- Any K-6 student catching the bus (supervised by executive staff)

Keeping student groups together - Week 3

RECESS 1 10:50 - 11:10am	
Kindergarten	Kindergarten playground
Year 1	Shaded Common
Years 2-6	COLA & Oval
LUNCH 1 12:40 - 1:05pm	
Kindergarten	Kindergarten playground
Year 1	Shaded Common
Years 2-6	COLA & Oval
LUNCH 2 1:05 - 1:30pm	
Kindergarten	Kindergarten playground
Year 1	Shaded Common
Years 2-6	COLA & Oval

Entry & Exit to the School

Level 3 plus; 25 October - Week4 - All students K-6 learning onsite

School Access: Start and end of day

- School gates will be supervised by executives at start and end of day.
- No parents to enter the school site under any circumstances.

Meehan Road Gate: morning

- Years K, 1 and 2 students go directly to their classroom from 8:30am in the morning

Meehan Road Gate: afternoon

- 2:40pm - Kinder pick up (escorted by class teachers)
- 2:45pm - Yr 1 pick up (escorted by class teachers)
- 2:50pm - Yr 2 pick up (escorted by class teachers)

Dorothy Street Gate: morning and afternoon

- Years 3 & 4 students go to their classroom from 8:30am
- Years 3 & 4 students leave school at 2:50pm (escorted by class teachers)

Caroola Road Gate: morning and afternoon

- Years 5 & 6 students go to their classroom from 8:30am (escorted by class teachers)
- Years 5 & 6 students leave school at 2:50pm (escorted by class teachers)

Waroon Road Gate: afternoon

- Any K-6 student catching the bus (supervised by executive staff)

COLA and Oval - Siblings: afternoon

- Siblings apart from K-2 will meet under the COLA and be picked up in Caroola Road (supervised by executive staff)

Keeping student groups together - Week 4

RECESS 1 10:10 - 10:40am	
Kindergarten	Kindergarten playground
Year 1	Shaded Common
Year 2	COLA & Oval
RECESS 2 10:45 - 11:15am	
Year 3	Shaded Common
Year 4	COLA & Oval
RECESS 3 11:20 - 11:50am	
Year 5	Shaded Common
Year 6	COLA & Oval

LUNCH 1 12noon - 12:40pm	
Kindergarten	Kindergarten playground
Year 1	Shaded Common
Year 2	COLA & Oval
LUNCH 2 12:45 - 1:25pm	
Year 3	Shaded Common
Year 4	COLA & Oval
LUNCH 3 1:30 - 2:10pm	
Year 5	Shaded Common
Year 6	COLA & Oval

Crunch and Sip will be varied throughout the day for each grade

School supplies brought back to school

- Textbooks
- Kindergarten decodable readers
- Pencils, textas and student pencil cases
- School hat
- Masks are strongly recommended for students

Recovery Curriculum

As educators, we need to acknowledge that there have been big losses to children as they have participated in learning from home, both in the 2020 year and the past thirteen weeks, in 2021.

We understand that children will be returning to school with a vast range of starting points.

Every school and community have been affected by Covid-19 differently and we have considered the needs of our whole school community to design a recovery plan for our pupils.

Recovery Curriculum

Student Wellbeing - Second Steps Social & Emotional Learning Program

- Rebuilding relationships with students and make them feel emotionally safe
- Developing confidence
- Developing self esteem and resilience as learners
- Re familiarising the students with school routines & systems

Individual Student Assessments - conducted by class teachers, support staff and senior executive

- Phonics
- Phonemic Awareness
- Reading
- Numeracy

English

- Reading and writing

Maths

- Numeracy

RFF Programs

- Music
- PDHPE
- Library

School Access - parents and visitors

- Parents must not enter the school site unless by prior arrangement via the school office.
- Parents must ring the school office if they need to pick up their child early to arrange pick up.
- Parent communication/ meetings must be held via phone unless otherwise approved by a senior executive.
- No visitors will be onsite.
- Delivery personnel are exceptions and must adhere to COVID sign in procedures and safety regulations.

Mask wearing for students and staff



Masks

Masks will be required for all staff and all students

in Year 7 and above while they are indoors and outdoors on school sites unless eating or exercising.

Masks are strongly recommended for primary students both indoors and outdoors unless eating or exercising.

Students should bring their own masks where possible, but schools will have back-up supplies just in case. Masks are also required for all travel on public transport for children 13 years and older.

Masks are required to be worn on school site by staff indoors and outdoors and is strongly recommended for students indoors and outdoors unless exercising or eating.

NSW Health has advised that this is an important part of reducing the risk of transmission and protecting people's health.

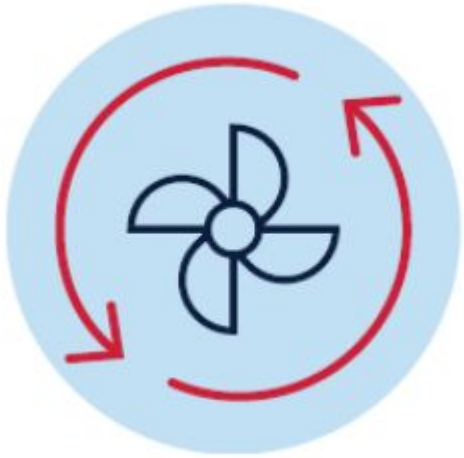
We encourage and support children to bring and wear their own mask whilst at school.

There is a plentiful supply of hand sanitiser and wipes available for all classrooms.

Ventilation

The department's ventilation and asset recommendations are informed by:

- NSW Health advice
- independent expert advice from Steensen Varming - a specialist mechanical engineering consultant
- research from the Doherty Institute
- guidelines from the World Health Organisation.



Ventilation is only one part of the return to school plan.

There is a comprehensive range of measures in place, including:

- vaccination of all staff and eligible students
- use of masks
- outdoor teaching where appropriate
- additional hygiene supplies
- continuation of enhanced cleaning

Ventilation

- The World Health Organisation has recommended 10 litres per second as a safe level of fresh air in classrooms. For a standard classroom, opening windows provided in accordance with the building code can deliver at least this.
- Having open or well-ventilated spaces reduces the risk of transmission of COVID-19 because infectious particles are more quickly diffused in the open air.
- The Department of Education has reviewed all windows, fans and ventilations in all schools.
- The school's audit indicates that there are no concerns and all learning spaces have the required level of natural ventilation.

School activities

During Term 4 many school-based activities will remain on hold until NSW Health advise otherwise.

This includes large celebrations like assemblies, presentation days and graduations, arts and sports events. If NSW Health advice changes, we will let you know about changes as soon as possible.

Our plan is to have the Year 6 students celebrate their end of primary schooling with a Year 6 Dinner Dance and Graduation in a COVID safe way, however only if Level 2 is reached (teachers and students only onsite).

Grade End of Year celebrations are currently being explored.

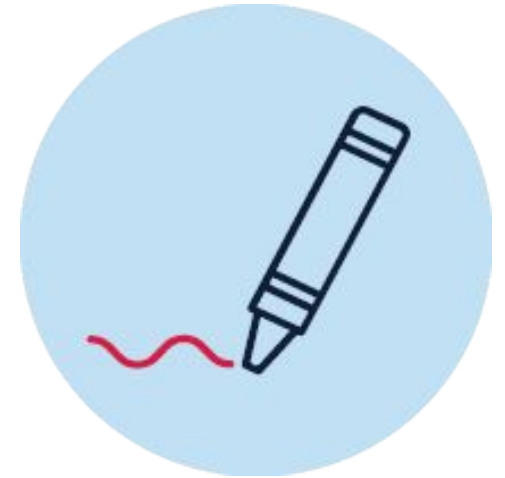


Orientation and transition to school

Onsite orientations and transition programs are not currently allowed in person on school sites until we are advised differently by NSW Health.

Information has been sent out to families regarding a 2022 Virtual Kindergarten Parent Information session for tomorrow night (Thursday 14th October) at 7pm.

High School transitions - further information regarding this will come shortly.



Outside of school hours care

Outside of school hours care and vacation care settings on school sites will follow the same COVID-safe guidelines as public schools including the staff requirement to be fully vaccinated from 8 November.



Procedures remain the same.

Further information and questions

All of our students are expected to be back at school for their staggered return dates. After this date we will only be supporting learning from home where this is required by NSW Health to do so.

Parents and students will be notified if a decision is made to close the school due to a confirmed case of COVID-19. During this time we will continue to provide learning from home activities and we will let you know when we can return to face-to-face learning through email, newsletters and the School App.

Find updated information on the Department's Advice for families page to support students who are anxious about the return to school – or get in touch with us directly.

Wellbeing for students and families page - [Advice for families](#)

Thank you for your time this afternoon

[Advice for families COVID-19](#) [Advice for families](#)

[Cromer Public School: Home](#)